

Purchasing and installing the ROTALIGN touch Voice app on Android devices

Introduction

This document describes the procedure of buying then installing the ROTALIGN touch Voice app on Android devices, and the main features of the app.

These instructions assume the user is well acquainted with the operation of the respective mobile smart device.

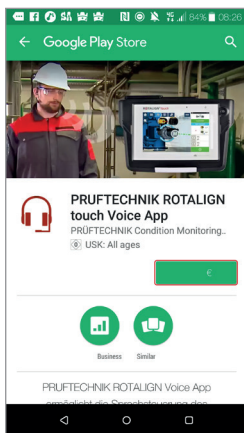


Note

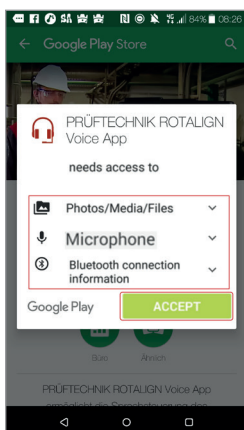
How to buy and install the app

ROALIGN touch Voice app is available in "Google Play". Access "Google play" using "Play Store" app (🌐). "Google Play" may also be accessed via play.google.com. Ensure you have strong connectivity to the Internet.

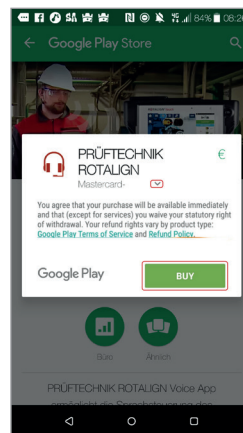
- ▶ Search or browse for "PRUFTECHNIK ROTALIGN touch Voice App".



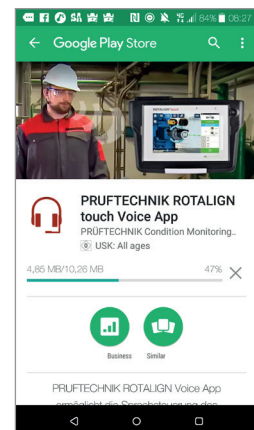
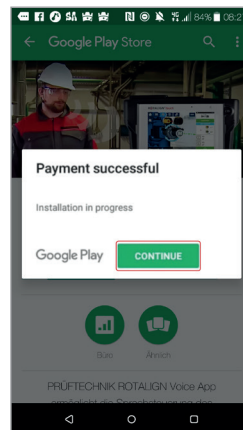
- ▶ Tap the item's price. You will be required to create a Google account if none exists.
- ▶ The following screen with app permissions appears.



- ▶ Tap "ACCEPT".

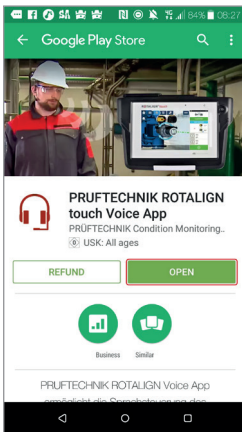


- ▶ Use the "Down" arrow (▼) to select the preferred payment method, then click "Buy". In this example, a credit card payment has been selected.



- ▶ Once payment is successful, the app installation begins. Tap "Continue" to proceed.

Purchasing and installing the ROTALIGN touch Voice app – page 2



Ensure you are still connected to the Internet. This is required to activate the license after initial installation.



Note

- ▶ When installation is completed, tap “Open” to start the app.

Internet connection is not necessary after the license has been activated.

Using the app

The app allows the controlling of specific ROTALIGN touch computer activities using speech commands. The following items are described in this section:

- ▶ Overview of the user interface
- ▶ How to connect the mobile device to ROTALIGN touch via Bluetooth®
- ▶ The command set recognized by the app

User interface

Figure 1 below shows the main screen of the application. The screen is divided into 3 sections: Connection status (1); Speech engine control (2); Event log (3).

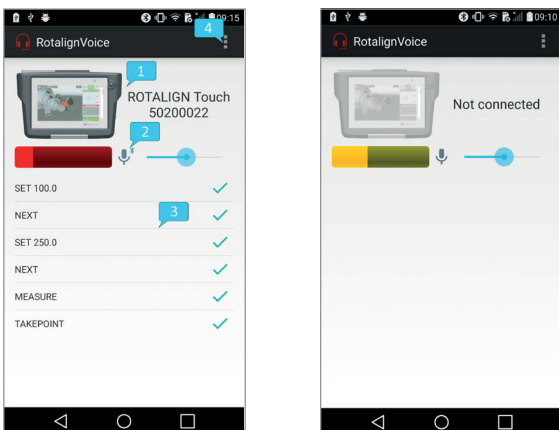


Figure 1: App main screen when connected to ROTALIGN touch (left) and when disconnected (right)

The connection status is the upper part of the screen and consists of the device icon and serial number. Tapping here will navigate to the device selection screen (Figure 2 below), containing the list of paired Bluetooth devices. Selecting an item from the list will initiate a connection to the device and return to the main screen. If the connection is successful, the ROTALIGN touch icon appears colored and its serial number is displayed. Otherwise, the icon appears in grayscale with the message “Not connected” displayed.

The speech engine control consists of an input level monitor, a listening state monitor and controller (the microphone icon) and a sensitivity controller (the sliding bar). The sensitivity controller adjusts the required minimum energy level of the incoming speech signal. Decreasing this parameter will cause the engine to react on lower energy signals and will increase the probability of detection errors. Tapping the listening state monitor pauses (or resumes) the speech recognition engine. In the paused state, it will only react to the LISTEN command.

The event log displays the recognized commands, their acknowledgement status (ACK – a green tick, NACK – a red “X”) and the received events from ROTALIGN touch. The list of commands can be found under “Command set”.

On the upper side of the screen, the action overflow button (4) provides access to the settings screen (Figure 2 below).

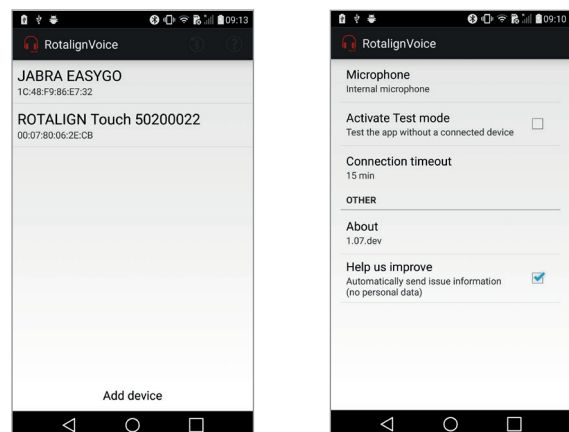


Figure 2: Device selection screen (left) and settings screen (right)

Purchasing and installing the ROTALIGN touch Voice app – page 3

The following parameters may be set:

- ▶ Microphone (internal or Bluetooth – if no Bluetooth microphone is present, the app will switch to the internal one by default)
- ▶ Test mode (no actual communication to ROTALIGN touch, but fully functional speech recognition)
- ▶ Connection timeout (the amount of time the speech engine runs after connection to ROTALIGN touch has been stopped)
- ▶ Improvement opt-out (no data is recorded in case of crashes)

Set-up sequence

To ensure correct functioning of the application, the following steps should be performed beforehand:

- ▶ If using a Bluetooth headset, ensure that the headset and the Android device are paired
- ▶ Check the active Bluetooth profiles of the headset – Call audio (for capturing the headset microphone input) and Media audio (for routing the audio feedback to the headset)

The app (and subsequently the speech engine) may be started.

NOTE: If the Bluetooth headset has not been paired prior to starting the app, the latter needs to be completely shut down before attempting pairing.

Bluetooth connection to ROTALIGN touch

The first step in establishing a Bluetooth connection is to select the device that is to be connected. If ROTALIGN touch is not listed in the device selection screen, tap “Add device” to navigate to the mobile device’s Bluetooth settings. On this screen, the two devices can be paired. ROTALIGN touch will then be listed in the selection screen. Tapping it will initiate the Bluetooth connection.

Command set

The following table lists recognized commands.

Command	Action
SET [0 – 99999.99] [0 – 99999.99] ENTER	Enters the spoken dimension value in the dimension field. The value may range from 0 – 99,999.99; a 2-decimal place precision. Dimension values may also be spoken digit for digit. For the decimal point say “POINT” or “DOT”.
NEXT	Navigates to the next dimension input field

BACK	Navigates to the previous dimension input field
DELETE CLEAR	Clears the selected dimension input field
START [START MEASURE(MENT)] [START SWEEP]	Starts a measurement
STOP [STOP MEASURE(MENT)] [STOP SWEEP] [STOP MOVE]	Stops the current measurement or Move
TAKE POINT [TAKE MEASUREMENT]	Takes a point in the current measurement
MOVE [START MOVE]	Starts Live Move
HORIZONTAL [HORIZONTAL VIEW] [HORIZONTAL DIRECTION]	Displays the horizontal view
Command	Action
3D [3D VIEW]	Displays the 3D view
2D [2D VIEW]	Displays the 2D view
ROTATE [ROTATE VIEW / MACHINE] [FLIP] [FLIP VIEW / MACHINE]	Flips the machine view
MEASURE [REMEASURE] [GO TO MEASURE]	Navigates to measurement screen
RESULT [RESULTS] [GO TO RESULT(S)]	Navigates to result screen
DIMENSION [DIMENSION(S)] [DIM(S)] [GO TO DIM(ENSIONS)]	Navigates to dimensions screen
SOFT FOOT [GO TO SOFT FOOT]	Navigates to soft foot screen
LISTEN	Control command for resuming speech recognition
STOP LISTENING	Control command for pausing speech recognition. If paused, speech recognition can be resumed vocally through the LISTEN command. All other commands are ignored