



FLUKE®

Reliability

Featured Services

Supporting the Fluke 3563 Analysis Vibration Sensor

About the Fluke 3563 Analysis Vibration Sensor



The Fluke 3563 is a wireless vibration sensor for screening and analyzing vibration data on a range of machine types. It combines a piezoelectric high-frequency sensor and two MEMS sensors with software, enabling maintenance teams to track and analyze asset vibration data regularly.

With 3563 sensors, you can monitor both critical and semi-critical assets. Use it in a condition-based maintenance (CBM) program to enable your team to focus on the machines most vital to your operations.

Customers who purchase the 3563 sensors receive support from Fluke Reliability experts to implement and maintain a condition-based maintenance program. This ensures a successful configuration, installation, and commissioning process. A range of vibration training options is available.



Fluke Reliability will provide in-depth training on the hardware installation and system for optimum performance. Customers have the flexibility to choose from a selection of sensors.

1 Installation, configuration, and commissioning

A product specialist will travel to your site to install and commission your wireless online vibration system on your assets. The service includes configuration of the assets and commissioning and installation of Fluke 3563 hardware and software.

The training includes:



A summary report provided, including the number of assets, number of sensors/gateways, and unique information about your facility and/or company

- Network setup
- Configuration schedule
- Configuration system



An assigned service team member will provide setup documents and videos and discuss network connection (Wi-Fi or Ethernet); this occurs prior to configuration, installation, and commissioning.



The service team member will schedule configuration setup time (2 hours as a standard) and installation and commissioning time (4 hours as a standard)



Configuration: the service team member and customer perform configuration of assets:

- Asset registry
- Tasks and alarming



The service team member provides documents and discusses critical information needed for commissioning and installation (such as network information, tools required, etc.):

- Commissioning and installation of sensor/gateway
- Report sent to the customer



Documentation of service:

- Getting Started manual
- Setup process
- Post-setup report

2 Training: Vibration as a practice

Our experienced vibration trainers will provide training on basic vibration principles and how to use the 3563 sensors.

Product purchased:

- \$1,000 for 16KIT
- \$2,000 for 16KIT+, 36KIT, and 36KIT+

Installation and training pricing:

(2-day minimum)

	2-day training:
Remote	\$2,000 per day
On-site	\$2,000 per day plus travel expenses

A Fluke Reliability Vibration Expert will provide instruction covering basic vibration principles, analysis of data collected, and hands-on training with wireless and handheld tools.

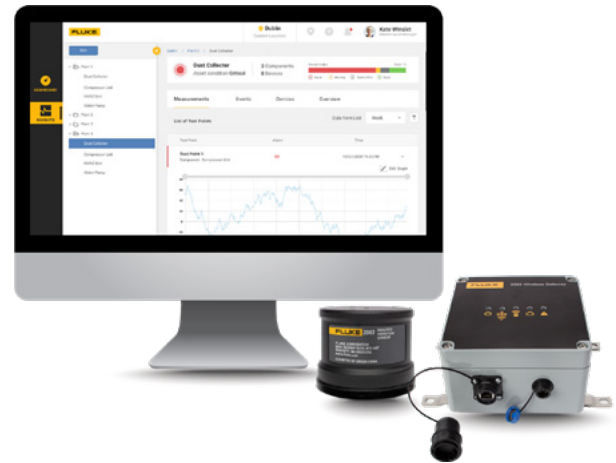
Itinerary:

Day 1 and Day 2 consist of:

- General vibration information and core principles
- LIVE-Asset Portal fundamentals
- How to read vibration data
- How to take action based on vibration data
- Hands-on vibration tool training

Documents of service:

- Training materials
- Certificates of completion



For further details on services or training, please contact your Fluke sales representative.

Fluke Corporation
PO Box 9090, Everett, WA 98206 U.S.A.

For more information call:
In the U.S.A. 856-810-2700
In Europe +353 507 9741
In UK +44 117 205 0408
Email: support@accelix.com
Web access: <http://www.emaint.com>

©2021 Fluke Corporation. Specifications subject to change without notice. 6/2021 6013920b-en

Modification of this document is not permitted without written permission from Fluke Corporation.